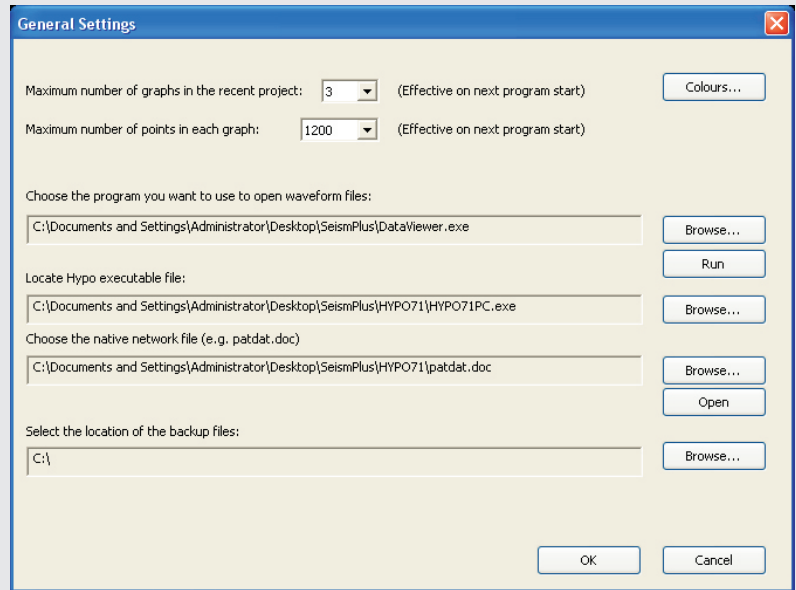


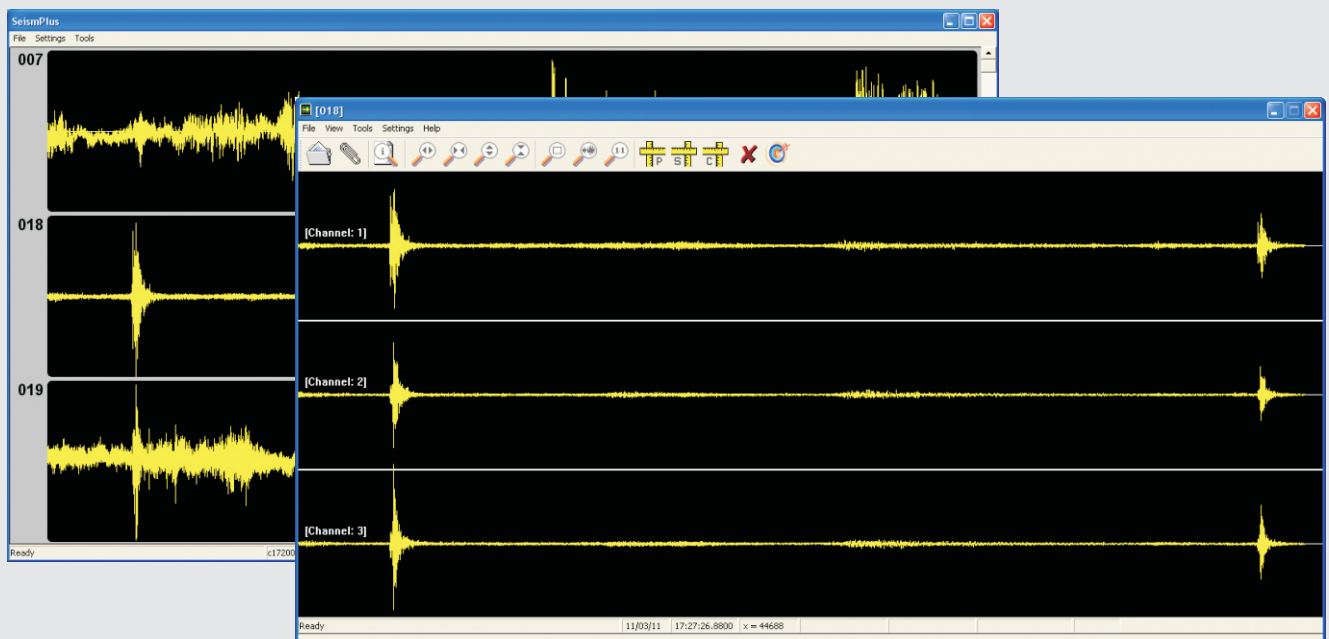
- ▶ Manual Event Picking
- ▶ CORE24/32 data format
- ▶ MiniSEED data format
- ▶ Hypo71 output file



The purpose of SeismPlus software is to locate the hypocenter and magnitude local seismic events. The standard software package provides two communication channels:

- The first one is used by the popular HYPO71PC program.
- The second one is dedicated to DataViewer application software providing picking facilities as well as a signal processing toolbox.

SeismPlus performs waveform display of different stations at the same time. The individual data files must be identical in all dimensions except station name.





Software Operation

Data can be input in one of the following seismological data formats: CoRe24/32, Mini-SEED, or ASCII for waveform files, and HYPO71 for phase files. Processed waveforms are output in CoRe24, Mini-SEED or ASCII data format, while phases and locations are saved only in the HYPO71 format. Other formats are available upon request.

Data files must be organized in a formal directory structure before working with them. They must be also classified by the station identification number. SeismPlus can support up to 200 stations at the same time, depending on the size and computer's memory capacity but this capability can be easily extended under request.

SeismPlus can only be used for one event at a time. There is no facility for multiple event location. SeismPlus works on any PC running Microsoft Windows 10/8/7/XP operating system.

